

SYSTEM ARCHITECTURE

Our system focuses on type dependencies to extract templates and rules for combining elements in triples. Based on grammar, we have assumed that we can reduce the complexity of the generation sentence process. Inside, Wordnet provides the synonyms for evaluating similarity between components in triples, especially in predicates.

The architecture of our system is a two-phase system: training phase in Fig.1, testing phase in Fig.2.

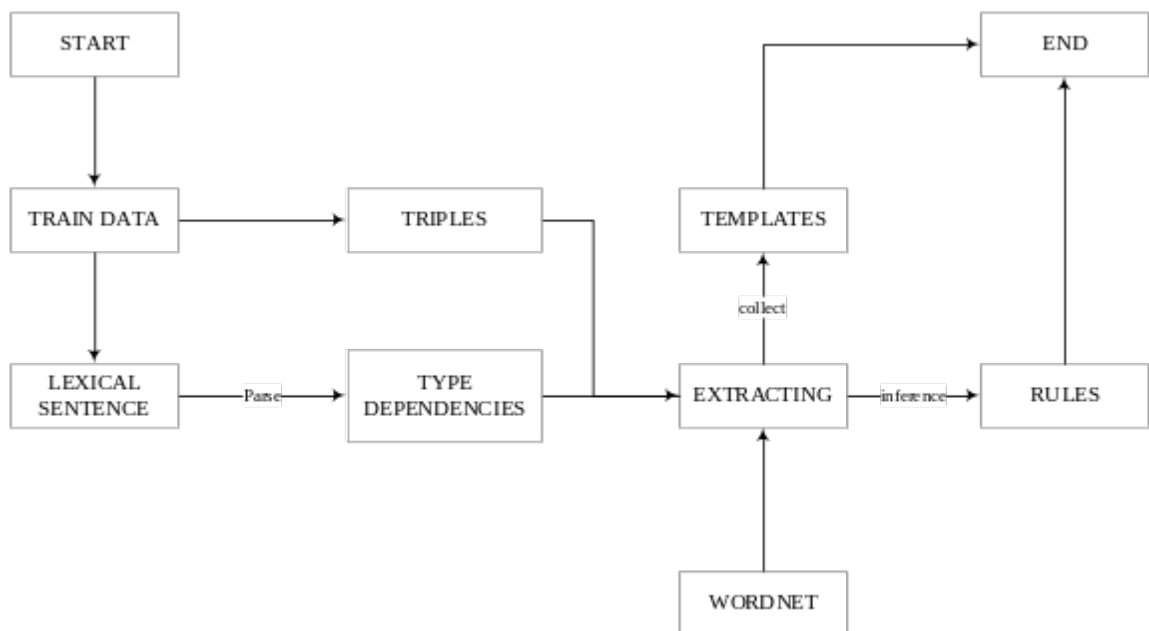


Figure 1- Training Phase

In training phase, exacting processing is the process of constructing templates and inference rules for information representation, based on probability, graph theory.

And test phase, the processing of generating sentences is based on templates and rules, that are extracted from train phase. WordNet use synonyms to calculate similarity between predicates in test data and predicates in train data.

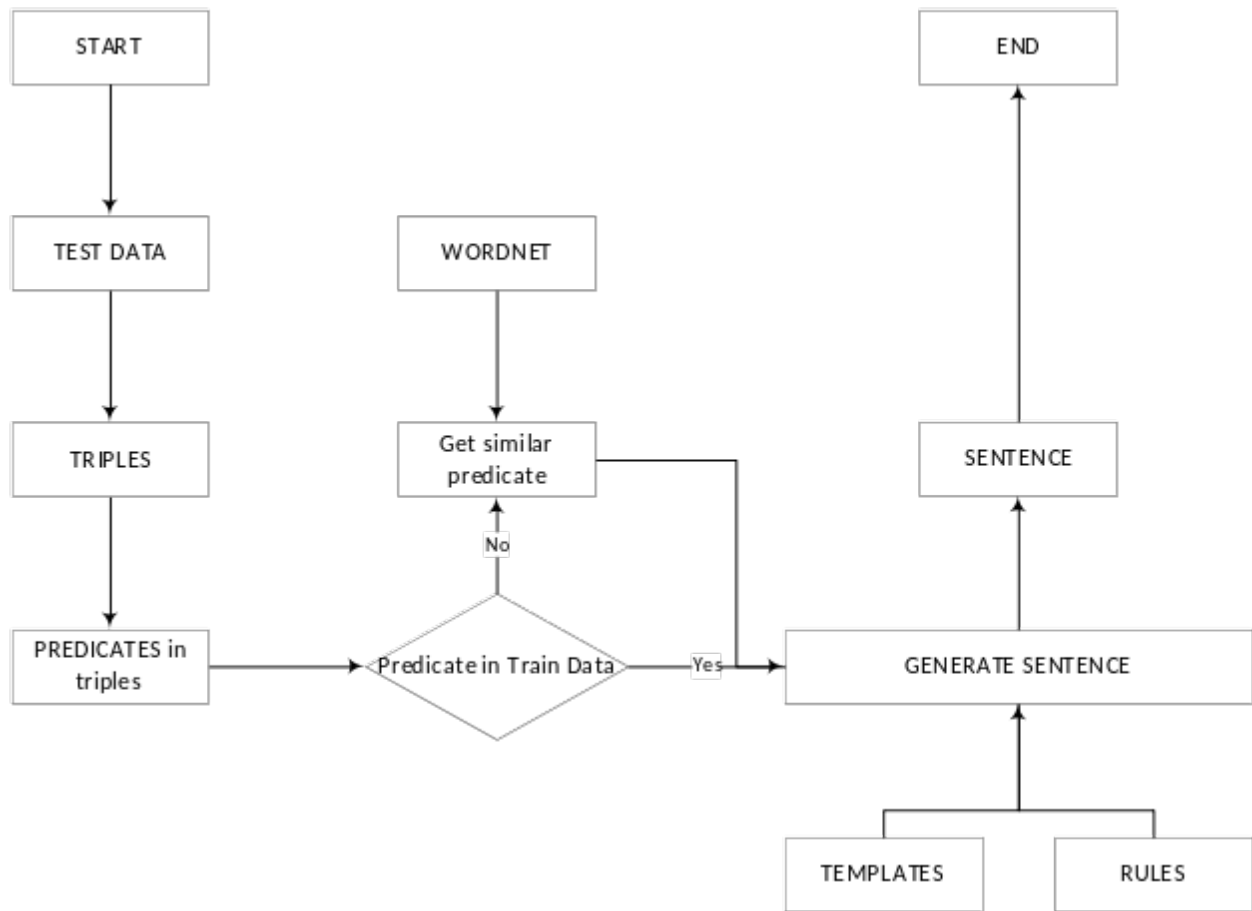


Figure 2- Test phase